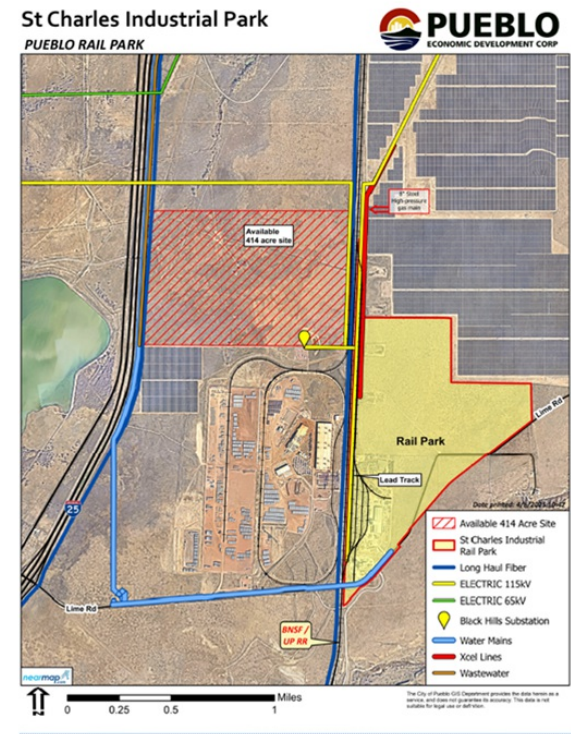


# St. Charles Industrial Park Rail Park

Lime Rd | Pueblo, CO | US | Pueblo County  
Available Acres: 300 |



## Property and Area Description

St Charles Industrial Park is Pueblo's dedicated Rail Park located along Interstate 25 on the southern edge of Pueblo. This property is owned by the City of Pueblo and is easily subdivided to meet a company's needs.

## Transportation

- Nearest Highway: HWY 50 (6.00 mi.)
- Nearest Interstate: I-25 (1.00 mi.)
- Nearest Airport: Pueblo Memorial Airport (10.00 mi.)
- Nearest Commercial Airport: Colorado Springs (40.00 mi.)
- Rail Served: Yes
- Rail Served By: Other
- Rail Accessible: Yes
- Rail Infrastructure in Place: Yes

## Utilities

- Electric: Black Hills Energy
- Natural Gas: Xcel Energy
- Water: Pueblo Board of Water Works
- Sewer: City of Pueblo
- Telecommunications: SEGRA (Unite Private Networks)

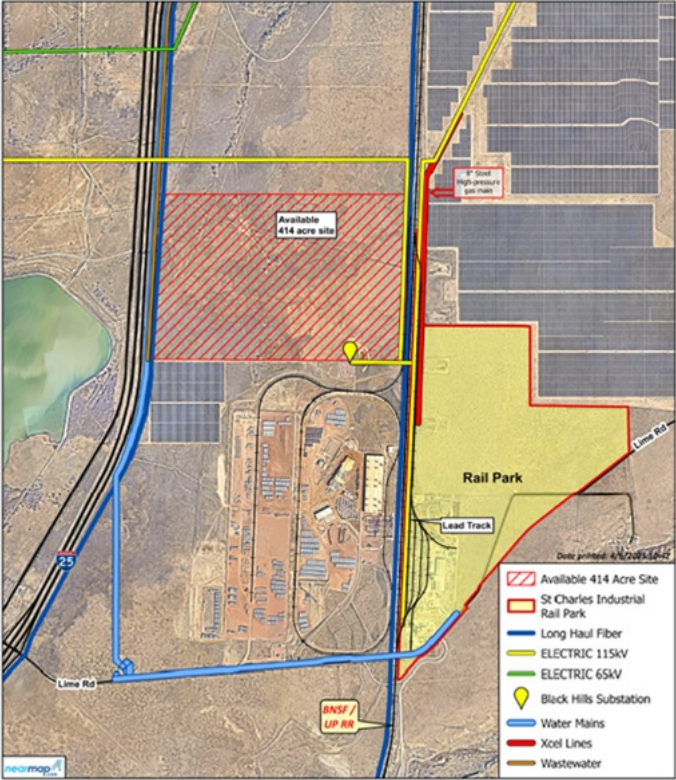
Zoning:	Industrial-Heavy
Topography:	flat
Adjacent Available Acres:	yes
Setting:	Industrial Park
Within City Limits:	Yes
Sale Price Note:	For economic development
Last Updated:	Apr 28, 2025

## Economic Development Contact

Shannon Baker  
PEDCO  
301 N Main St  
Pueblo, CO 81003  
(719) 544-2000 | sbaker@pedco.org

Property Images

St Charles Industrial Park  
PUEBLO RAIL PARK



Margaret Gaillard | Pueblo Economic Development Corporation  
301 N. Main St | Pueblo, CO 81003 | (719) 544-2000 | mgaillard@pedco.org